

M

機床配件 Machine Accessories



◎ 搪孔刀 Boring Tool

BJ M02

◎ 圓型鋸片刀桿 Carbide Circular Saw Holder

TTA M03

◎ 內孔刀具定位座 Lathe Quick Center Block

ETHR M03

◎ 中心鑽刀桿 Centre Drill Holder

ECH M04

◎ 套筒 Sleeve

SHB M05 – M06

SHB-O M07

NEW EHR M08 – M09

EHR-O M10

EHRMT M11

DHR M12

NEW ELM M12

◎ E R 夾頭柄 ER Collet Chuck

EKA M13

NEW AKA M13

◎ E C-E R 筒夾螺母 EC-ER Collet Nut

EC-ER M14

◎ E R 扳手 ER Wrench

ER M14

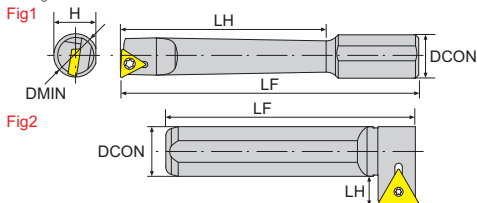
◎ E R 筒夾 ER Collet

ER M15

◎ 外徑墊高輔助刀座 Increased Outer Diameter Converter

LST M16

BJ 擴孔刀
Boring Tool



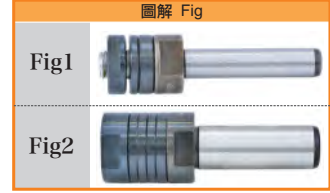
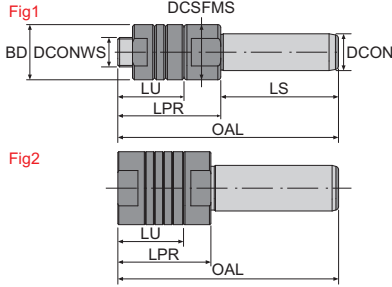
寸法 Dimension(mm)



| 產品型號 Model No | 圖解 Fig | 在庫 Stock | 最小加工徑 DMIN | 柄部直徑 DCON | 刀柄高度 H | 刀頭長度 LH | 標準全長 LF | 刀片 Insert | 螺絲 Screw | 旗型板手 Wrench | 價格 Price |
|---------------|--------|----------|------------|-----------|--------|---------|---------|----------------|----------|-------------|----------|
| BJ2008-32 | 1 | ● | 8-10 | 20 | 18 | 32 | 80 | TB□□ 0601□□ | CS20 | T-6 | |
| BJ2010-40 | 1 | ● | 10-12 | 20 | 18 | 40 | 87 | | | | |
| BJ2012-53 | 1 | ● | 12-16 | 20 | 18 | 53 | 98 | TP□□ 0902□□ | CS25 | T-8 | |
| BJ2016-68 | 1 | ● | 16-20 | 20 | 18 | 68 | 110 | | | | |
| BJ2020-83 | 1 | ● | 20-25 | 20 | 18 | 83 | 122 | | | | |
| BJ2025-96 | 1 | ● | 25-30 | 20 | 18 | 96 | 133 | | | | |
| BJ2030-115 | 1 | ● | 30-35 | 20 | 18 | 115 | 152 | TP□□ 1103□□ | CS30 | T-10 | |
| BJ-L20-36 | 2 | ● | — | 20 | 18 | 8 | 100 | | | | |

TTA 鑄鋼管型鋸片刀桿

Carbide Circular Saw Holder

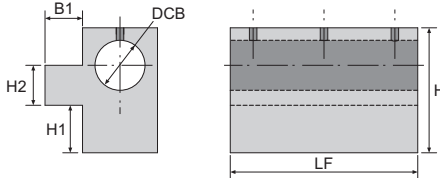


寸法 Dimension(mm)

| 產品型號 Model No | 圖解 Fig | 在庫 Stock | 工作懸伸長度 | 柄部直徑 | 可使用長度 | 刀柄長度 | 全長 | 刀體直徑 | 接觸面直徑 | 工件端連接直徑 | 價格 Price |
|---------------|--------|----------|--------|------|-------|------|-----|------|-------|---------|----------|
| | | | LPR | DCON | LU | LS | | | OAL | BD | |
| TTA-06-C10 | 1 | ● | 28 | 10 | 18 | 32 | 60 | 12 | 12 | 6 | |
| TTA-08-C10 | 1 | ● | 28 | 10 | 18 | 32 | 60 | 15 | 15 | 8 | |
| TTA-12.7-C10 | 1 | ● | 28 | 10 | 18 | 47 | 75 | 20 | 20 | 12.7 | |
| TTA-25.4-C25 | 2 | ● | 51 | 25 | 36 | 70 | 121 | 40 | 40 | 25.4 | |

ETHR 內孔刀具定位座

Lathe Quick Center Block

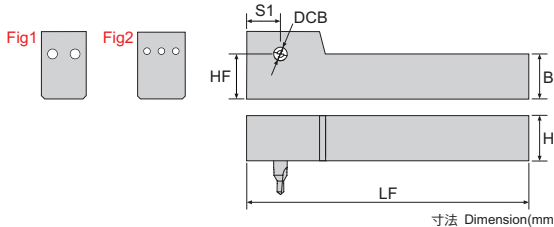


寸法 Dimension(mm)

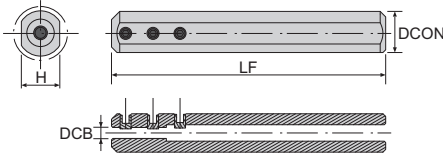
| 產品型號 Model No | 在庫 Stock | 刀柄徑孔徑 | 刀柄高度 | 刀柄高度 | 刀柄高度 | 標準全長 | 刀柄寬度 | 無頭螺絲 | L型板手 | 價格 Price |
|---------------|----------|-------|------|------|------|------|------|--------|-------|----------|
| | | DCB | H | H1 | H2 | | | LF | B1 | |
| ETHR2032 | ● | 32 | 64 | 18 | 20 | 80 | 23 | ES-808 | LW040 | |
| ETHR2532 | ● | 32 | 64 | 18 | 25 | 80 | 23 | | | |
| ETHR2040 | ● | 40 | 76 | 30 | 20 | 90 | 35 | ES-810 | LW040 | |
| ETHR2540 | ● | 40 | 76 | 30 | 25 | 90 | 35 | | | |
| ETHR3240 | ● | 40 | 76 | 30 | 32 | 90 | 35 | | | |

ECH

中心鑽刀桿 Centre Drill Holder
材質：鋼 Shank：Steel



| 產品型號 Model No | 圖解 Fig | 在庫 Stock | 刀柄徑孔徑 DCB | 刀柄高度 H | 刀柄寬度 B | 標準全長 LF | 刀尖高度 HF | 刀尖寬度 S1 | 無頭螺絲 Screw | L型扳手 Wrench | 價格 Price |
|---------------|--------|----------|-----------|--------|--------|---------|---------|---------|------------|-------------|----------|
| ECH-2020K05 | 1 | ● | 5 | 20 | 20 | 125 | 20 | 15 | ES-410 | LW020 | |
| ECH-2020K06 | 1 | ● | 6 | 20 | 20 | 125 | 20 | 15 | ES-510 | LW025 | |
| ECH-2020K08 | 1 | ● | 8 | 20 | 20 | 125 | 20 | 15 | ES-610 | LW030 | |
| ECH-2020K10 | 1 | ● | 10 | 20 | 20 | 125 | 20 | 15 | ES-810 | LW040 | |
| ECH-2020K12 | 1 | ● | 12 | 20 | 20 | 125 | 20 | 15 | | | |
| ECH-2525M05 | 2 | ● | 5 | 25 | 25 | 150 | 25 | 15 | ES-410 | LW020 | |
| ECH-2525M06 | 2 | ● | 6 | 25 | 25 | 150 | 25 | 15 | ES-510 | LW025 | |
| ECH-2525M08 | 1 | ● | 8 | 25 | 25 | 150 | 25 | 15 | ES-610 | LW030 | |
| ECH-2525M10 | 1 | ● | 10 | 25 | 25 | 150 | 25 | 15 | ES-810 | LW040 | |
| ECH-2525M12 | 1 | ● | 12 | 25 | 25 | 150 | 25 | 15 | | | |
| ECH-2525M16 | 1 | ● | 16 | 25 | 25 | 150 | 25 | 20 | | | |

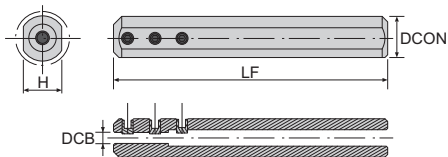
SHB 套筒 Sleeve
 材質：鋼 Shank : Steel


圖解 Fig

寸法 Dimension(mm)

| 產品型號 Model No | 在庫 Stock | 刃柄徑 孔徑 | 柄部直徑 | 刀柄高度 | 標準全長 | 適用刀具柄徑 Assembly Holder Page. H05~H13 | 無頭螺絲 Screw | L型板手 Wrench | 價格 Price |
|---------------|----------|--------|-------|-------|------|---|------------|-------------|----------|
| | | DCB | DCON | H | LF | | | | |
| SHB-0316 | ● | 3 | 16 | 15 | 100 | 3 | ES-306 | LW015 | |
| SHB-0416 | ● | 4 | 16 | 15 | 100 | 4 | ES-404 | LW020 | |
| SHB-0516 | ● | 5 | 16 | 15 | 100 | 5 | | | |
| SHB-0616 | ● | 6 | 16 | 15 | 100 | 6 | | | |
| SHB-0816 | ● | 8 | 16 | 15 | 100 | 8 | ES-604 | LW030 | |
| SHB-1016 | ● | 10 | 16 | 15 | 100 | 10 | | | |
| SHB-1216 | ● | 12 | 16 | 15 | 100 | 12 | | | |
| SHB-03-19.05 | ● | 3 | 19.05 | 18.05 | 100 | 3 | ES-306 | LW015 | |
| SHB-04-19.05 | ● | 4 | 19.05 | 18.05 | 100 | 4 | ES-406 | LW020 | |
| SHB-05-19.05 | ● | 5 | 19.05 | 18.05 | 100 | 5 | | | |
| SHB-06-19.05 | ● | 6 | 19.05 | 18.05 | 100 | 6 | | | |
| SHB-08-19.05 | ● | 8 | 19.05 | 18.05 | 100 | 8 | ES-604 | LW030 | |
| SHB-10-19.05 | ● | 10 | 19.05 | 18.05 | 100 | 10 | | | |
| SHB-12-19.05 | ● | 12 | 19.05 | 18.05 | 100 | 12 | | | |
| SHB-0320 | ● | 3 | 20 | 19 | 100 | 3 | ES-306 | LW015 | |
| SHB-0420 | ● | 4 | 20 | 19 | 100 | 4 | ES-404 | LW020 | |
| SHB-0520 | ● | 5 | 20 | 19 | 100 | 5 | ES-406 | | |
| SHB-0620 | ● | 6 | 20 | 19 | 100 | 6 | | | |
| SHB-0820 | ● | 8 | 20 | 19 | 100 | 8 | ES-606 | LW030 | |
| SHB-1020 | ● | 10 | 20 | 19 | 100 | 10 | ES-604 | | |
| SHB-1220 | ● | 12 | 20 | 19 | 100 | 12 | | | |

※ 請接下頁。 ※ Continued on next page.

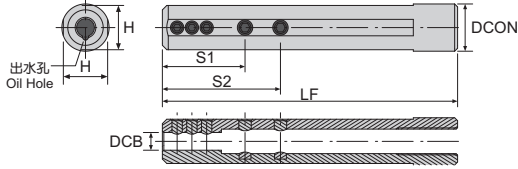


圖解 Fig

寸法 Dimension(mm)

| 產品型號 Model No | 在庫 Stock | 寸法 Dimension(mm) | | | | 適用刀具柄徑 Assembly Holder Page. H05~H13 | 無頭螺絲 Screw | L型扳手 Wrench | 價格 Price |
|---------------|----------|------------------|-----------|--------|---------|---|------------|-------------|----------|
| | | 刃柄徑孔徑 DCB | 柄部直徑 DCON | 刀柄高度 H | 標準全長 LF | | | | |
| SHB-0322 | ● | 3 | 22 | 21 | 100 | 3 | ES-306 | LW015 | |
| SHB-0422 | ● | 4 | 22 | 21 | 100 | 4 | ES-406 | LW020 | |
| SHB-0522 | ● | 5 | 22 | 21 | 100 | 5 | | | |
| SHB-0622 | ● | 6 | 22 | 21 | 100 | 6 | | | |
| SHB-0822 | ● | 8 | 22 | 21 | 100 | 8 | ES-606 | LW030 | |
| SHB-1022 | ● | 10 | 22 | 21 | 100 | 10 | | | |
| SHB-1222 | ● | 12 | 22 | 21 | 100 | 12 | | | |
| SHB-1622 | ● | 16 | 22 | 21 | 100 | 16 | ES-604 | | |
| SHB-04-25.4 | ● | 4 | 25 | 24 | 100 | 4 | ES-404 | LW020 | |
| SHB-06-25.4 | ● | 6 | 25 | 24 | 100 | 6 | ES-406 | | |
| SHB-08-25.4 | ● | 8 | 25 | 24 | 100 | 8 | ES-606 | | LW030 |
| SHB-10-25.4 | ● | 10 | 25 | 24 | 100 | 10 | | | |
| SHB-12-25.4 | ● | 12 | 25 | 24 | 100 | 12 | | | |
| SHB-14-25.4 | ● | 14 | 25 | 24 | 100 | 14 | ES-604 | | |
| SHB-16-25.4 | ● | 16 | 25 | 24 | 100 | 16 | | | |
| SHB-04-25.4 | ● | 4 | 25.4 | 24.4 | 100 | 4 | ES-404 | LW020 | |
| SHB-05-25.4 | ● | 5 | 25.4 | 24.4 | 100 | 5 | ES-406 | | |
| SHB-06-25.4 | ● | 6 | 25.4 | 24.4 | 100 | 6 | | | |
| SHB-08-25.4 | ● | 8 | 25.4 | 24.4 | 100 | 8 | ES-606 | LW030 | |
| SHB-10-25.4 | ● | 10 | 25.4 | 24.4 | 100 | 10 | | | |
| SHB-12-25.4 | ● | 12 | 25.4 | 24.4 | 100 | 12 | | | |
| SHB-16-25.4 | ● | 16 | 25.4 | 24.4 | 100 | 16 | ES-604 | | |

SHB-O

 出水套筒 Sleeve With Oil Hole
 材質：鋼 Shank : Steel


圖解 Fig

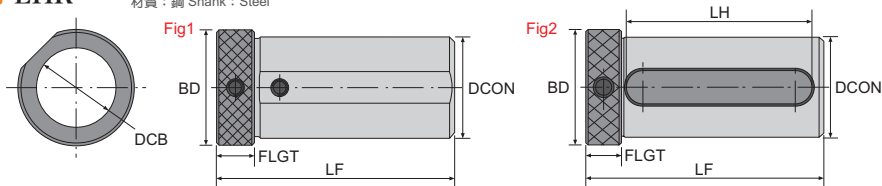

 新規格上市
 New Specification Arrival

寸法 Dimension(mm)

| 產品型號 Model No | 在庫 Stock | 刃柄徑 | 柄部直徑 | 刃柄高度 | 標準全長 | 定位長度 | 定位長度 | 中心銷 Screw of shim | 無頭螺絲 Screw | L型扳手 Wrench | 價格 Price |
|-----------------------|----------|-----|-------|-------|------|------|------|-------------------------|------------------|----------------|-------------|
| | | DCB | DCON | H | LF | S1 | S2 | | | | |
| SHB-0316-O | ● | 3 | 16 | 15 | 100 | 25 | 34 | SSP-513 | ES-306 ES-505 | LW015 LW025 | |
| SHB-0416-O | ● | 4 | 16 | 15 | 100 | 26 | 36 | | ES-404 ES-505 | LW020 | |
| SHB-0516-O | ● | 5 | 16 | 15 | 100 | 27 | 38 | | ES-404 ES-504 | | |
| SHB-0616-O | ● | 6 | 16 | 15 | 100 | 28 | 40 | | ES-404 ES-504 | | LW025 |
| SHB-0816-O | ● | 8 | 16 | 15 | 100 | 38 | — | | ES-404 | | |
| SHB-04-19.05-O | | 4 | 19.05 | 18.05 | 100 | 26 | 36 | SSP-513 | ES-406 ES-506 | LW020 LW025 | |
| SHB-05-19.05-O | | 5 | 19.05 | 18.05 | 100 | 27 | 38 | | ES-406 ES-506 | | |
| SHB-06-19.05-O | | 6 | 19.05 | 18.05 | 100 | 28 | 40 | | ES-404 | | |
| SHB-08-19.05-O | | 8 | 19.05 | 18.05 | 100 | 38 | — | | | | |
| SHB-0420-O | ● | 4 | 20 | 19 | 100 | 26 | 36 | SSP-515 | ES-406 ES-506 | LW020 LW025 | |
| SHB-0520-O | ● | 5 | 20 | 19 | 100 | 27 | 38 | | ES-406 ES-506 | | |
| SHB-0620-O | ● | 6 | 20 | 19 | 100 | 28 | 40 | | ES-606 | LW025 LW030 | |
| SHB-0820-O | ● | 8 | 20 | 19 | 100 | 38 | — | | | | |
| NEW SHB-0322-O | | 3 | 22 | 21 | 100 | 25 | 34 | SSP-515 | ES-306 ES-506 | LW015 LW025 | |
| SHB-0422-O | | 4 | 22 | 21 | 100 | 26 | 36 | | ES-406 ES-506 | LW020 LW025 | |
| SHB-0522-O | | 5 | 22 | 21 | 100 | 27 | 38 | | ES-406 ES-506 | | |
| SHB-0622-O | | 6 | 22 | 21 | 100 | 28 | 40 | | ES-506 ES-606 | LW025 LW030 | |
| SHB-0822-O | | 8 | 22 | 21 | 100 | 38 | 52 | | | | |
| SHB-1022-O | | 10 | 22 | 21 | 100 | 40 | — | | | | |
| SHB-04-25.4-O | | 4 | 25.4 | 24.4 | 100 | 26 | 36 | SSP-518 | ES-404 ES-506 | LW020 LW025 | |
| SHB-05-25.4-O | | 5 | 25.4 | 24.4 | 100 | 27 | 38 | | ES-406 ES-506 | | |
| SHB-06-25.4-O | | 6 | 25.4 | 24.4 | 100 | 28 | 40 | | ES-506 ES-606 | LW025 LW030 | |
| SHB-08-25.4-O | | 8 | 25.4 | 24.4 | 100 | 38 | 52 | | | | |
| SHB-10-25.4-O | | 10 | 25.4 | 24.4 | 100 | 40 | 56 | | | | |

EHR

EHR套筒 EHR Sleeve
材質：鋼 Shank：Steel



新規格上市
New Specification Arrival

寸法 Dimension(mm)

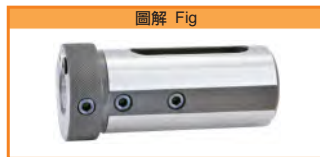
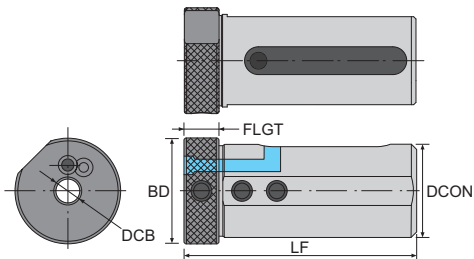
| 圖示 Fig | 產品型號 Model No | 圖解 Fig | 在庫 Stock | 刃柄徑 孔徑 | | 標準 全長 LF | 可使用 長度 LH | 刀體 直徑 BD | 法蘭盤 厚度 FLGT | 無頭螺絲 Screw | 價格 Price |
|-----------|---------------|-----------|-------------|-----------|------|----------------|-----------------|----------------|-------------------|---------------|-------------|
| | | | | DCB | DCON | | | | | | |
| | EHR-0625 | 1 | ● | 6 | 25 | 64 | — | 34 | 6 | ES-606 | |
| | EHR-0825 | 1 | ● | 8 | 25 | 64 | — | 34 | 6 | | |
| | EHR-1025 | 1 | ● | 10 | 25 | 64 | — | 34 | 6 | ES-604 | |
| | EHR-1225 | 1 | ● | 12 | 25 | 64 | — | 34 | 6 | | |
| | EHR-1625 | 2 | ● | 16 | 25 | 64 | 48.8 | 34 | 6 | — | |
| | EHR-2025 | 2 | ● | 20 | 25 | 64 | 48.8 | 34 | 6 | | |
| | EHR-06-25.4 | 1 | ● | 6 | 25.4 | 64 | — | 34 | 6 | ES-606 | |
| | EHR-08-25.4 | 1 | ● | 8 | 25.4 | 64 | — | 34 | 6 | | |
| | EHR-10-25.4 | 1 | ● | 10 | 25.4 | 64 | — | 34 | 6 | ES-604 | |
| | EHR-12-25.4 | 1 | ● | 12 | 25.4 | 64 | — | 34 | 6 | | |
| | EHR-16-25.4 | 2 | ● | 16 | 25.4 | 64 | 48 | 34 | 6 | — | |
| | EHR-0632 | 1 | ● | 6 | 32 | 100 | — | 38 | 15 | ES-610 | |
| | EHR-0832 | 1 | ● | 8 | 32 | 100 | — | 38 | 15 | | |
| | EHR-1032 | 1 | ● | 10 | 32 | 100 | — | 38 | 15 | ES-808 | |
| | EHR-1232 | 1 | ● | 12 | 32 | 100 | — | 38 | 15 | | |
| | EHR-1632 | 1 | ● | 16 | 32 | 100 | — | 38 | 15 | | |
| | EHR-2032 | 2 | ● | 20 | 32 | 100 | 78 | 38 | 15 | ES-808 | |
| | EHR-2532 | 2 | ● | 25 | 32 | 100 | 78 | 38 | 15 | | |

※ 請接下頁。 ※ Continued on next page.

| 圖示 Fig | 產品型號 Model No | 圖解 Fig | 在庫 Stock | 寸法 Dimension(mm) | | | | | | | 無頭螺絲 Screw | 價格 Price |
|---|---------------|-----------|-------------|------------------|----------|----------|-----------|----------|-----------|--------|---------------|-------------|
| | | | | 刃柄徑 孔徑 | 柄部 直徑 | 標準 全長 | 可使用 長度 | 刀體 直徑 | 法蘭盤 厚度 | | | |
| | | | | DCB | DCON | LF | LH | BD | FLGT | | | |
|  | EHR-0640 | 1 | ● | 6 | 40 | 100 | — | 46 | 15 | ES-610 | | |
| | EHR-0840 | 1 | ● | 8 | 40 | 100 | — | 46 | 15 | | | |
|  | EHR-1040 | 1 | ● | 10 | 40 | 100 | — | 46 | 15 | ES-810 | | |
| | EHR-1240 | 1 | ● | 12 | 40 | 100 | — | 46 | 15 | | | |
| | EHR-1440 | 1 | ● | 14 | 40 | 100 | — | 46 | 15 | | | |
| | EHR-1640 | 1 | ● | 16 | 40 | 100 | — | 46 | 15 | | | |
|  | EHR-2040 | 2 | ● | 20 | 40 | 100 | 78 | 46 | 15 | ES-806 | | |
| | EHR-2040A | 1 | ● | 20 | 40 | 100 | — | 46 | 15 | | | |
| | EHR-2540 | 2 | ● | 25 | 40 | 100 | 78 | 46 | 15 | | | |
| | EHR-3240 | 2 | ● | 32 | 40 | 100 | 78 | 46 | 15 | | | |
|  | EHR-0650 | 1 | ● | 6 | 50 | 100 | — | 58 | 15 | ES-610 | | |
| | EHR-0850 | 1 | ● | 8 | 50 | 100 | — | 58 | 15 | | | |
|  | EHR-1050 | 1 | ● | 10 | 50 | 100 | — | 58 | 15 | ES-810 | | |
| | EHR-1250 | 1 | ● | 12 | 50 | 100 | — | 58 | 15 | | | |
| | EHR-1650 | 1 | ● | 16 | 50 | 100 | — | 58 | 15 | | | |
|  | EHR-2050 | 1 | ● | 20 | 50 | 100 | — | 58 | 15 | ES-810 | | |
| | EHR-2550 | 1 | ● | 25 | 50 | 100 | — | 58 | 15 | | | |
|  | EHR-3250 | 2 | ● | 32 | 50 | 100 | 78 | 58 | 15 | ES-808 | | |
| | EHR-4050 | 2 | ● | 40 | 50 | 100 | 78 | 58 | 15 | | | |

EHR-O

內徑出水套筒 Sleeve With Coolant Hole
材質：鋼 Shank : Steel

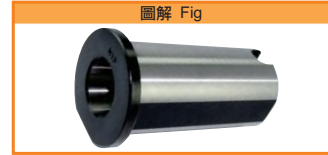
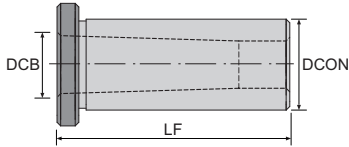


圖解 Fig

寸法 Dimension(mm)

| 圖示 Fig | 產品型號 Model No | 在庫 Stock | 刃柄徑 孔徑 DCB | 柄部 直徑 DCON | 標準 全長 LF | 刀體 直徑 BD | 法蘭盤 厚度 FLGT | 無頭螺絲 Screw | 可調 出水孔 | 螺絲 Screw | 價格 Price |
|-----------|---------------|-------------|------------------|------------------|----------------|----------------|-------------------|---------------|-----------|-------------|-------------|
| | EHR-0632-O | ● | 6 | 32 | 95 | 38 | 15 | ES-610 | EHR-O | TS408 | |
| | EHR-0832-O | ● | 8 | 32 | 95 | 38 | 15 | | | | |
| | EHR-1032-O | ● | 10 | 32 | 95 | 38 | 15 | ES-808 | EHR-O | TS408 | |
| | EHR-1232-O | ● | 12 | 32 | 95 | 38 | 15 | | | | |
| | EHR-1632-O | ● | 16 | 32 | 95 | 38 | 15 | ES-806 | | | |
| | EHR-0640-O | ● | 6 | 40 | 100 | 46 | 15 | ES-610 | EHR-O | TS408 | |
| | EHR-0840-O | ● | 8 | 40 | 100 | 46 | 15 | | | | |
| | EHR-1040-O | ● | 10 | 40 | 100 | 46 | 15 | ES-810 | | | |
| | EHR-1240-O | ● | 12 | 40 | 100 | 46 | 15 | | | | |
| | EHR-1440-O | ● | 14 | 40 | 100 | 46 | 15 | | | | |
| | EHR-1640-O | ● | 16 | 40 | 100 | 46 | 15 | | | | |
| | EHR-2040-O | ● | 20 | 40 | 100 | 46 | 15 | ES-808 | | | |
| | EHR-2540-O | ● | 25 | 40 | 100 | 46 | 15 | ES-806 | | | |

EHRMT

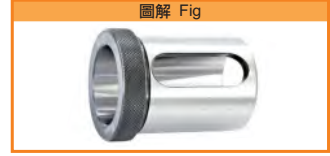
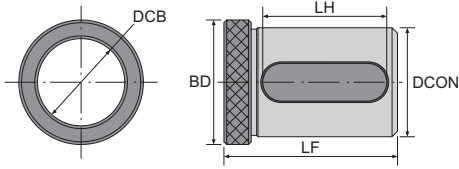
 MT内徑套筒 MT Sleeve
 材質：鋼 Shank : Steel


寸法 Dimension(mm)

| 產品型號 Model No | 在庫 Stock | 寸法 Dimension(mm) | | | 價格 Price |
|---------------|----------|------------------|-----------|---------|----------|
| | | 刃柄徑 孔徑 DCB | 柄部直徑 DCON | 標準全長 LF | |
| EHRMT1-25 | ● | MT1 | 25 | 70 | |
| EHRMT2-25 | ● | MT2 | 25 | 80 | |
| EHRMT3-25 | ● | MT3 | 25 | 90 | |
| EHRMT1-32 | ● | MT1 | 32 | 85 | |
| EHRMT2-32 | ● | MT2 | 32 | 85 | |
| EHRMT3-32 | ● | MT3 | 32 | 100 | |
| EHRMT1-40 | ● | MT1 | 40 | 87 | |
| EHRMT2-40 | ● | MT2 | 40 | 87 | |
| EHRMT3-40 | ● | MT3 | 40 | 87 | |
| EHRMT4-40 | ● | MT4 | 40 | 116 | |
| EHRMT1-50 | ● | MT1 | 50 | 120 | |
| EHRMT2-50 | ● | MT2 | 50 | 120 | |
| EHRMT3-50 | ● | MT3 | 50 | 120 | |
| EHRMT4-50 | ● | MT4 | 50 | 120 | |

DHR

快速鑽頭套筒 Rapid Drill Sleeve
材質：鋼 Shank：Steel

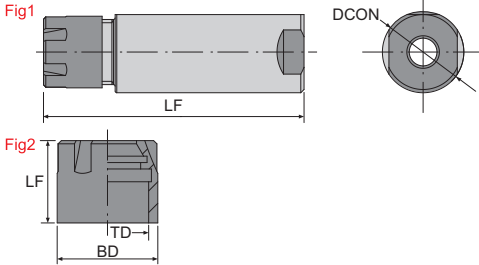


寸法 Dimension(mm)

| 產品型號 Model No | 在庫 Stock | 刃柄徑 孔徑 | 柄部直徑 | 可使用長度 | 標準全長 | 刀體直徑 | 價格 Price |
|---------------|----------|--------|------|-------|------|------|----------|
| | | DCB | DCON | LH | LF | BD | |
| DHR-2532 | ● | 25 | 32 | 47 | 58 | 36 | |
| DHR-2540 | ● | 25 | 40 | 41 | 60 | 46 | |
| DHR-3240 | ● | 32 | 40 | 41 | 60 | 46 | |

ELM

車銑複合式套筒 Sleeve / 螺母 Nu
材質：鋼 Shank：Steel



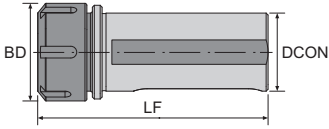
寸法 Dimension(mm)

新規格上市
New Specification Arrival

| 產品型號 Model No | 圖解 Fig | 在庫 Stock | 柄部直徑 | 刀體直徑 | 螺紋直徑 | 標準全長 | 無頭螺絲 Screw | 價格 Price |
|-----------------|--------|----------|------|------|------|------|------------|----------|
| | | | DCON | BD | TD | LF | | |
| ELM-ER16-C22-80 | 1 | ● | 22 | — | — | 80 | ES-1020 | |
| ELM-ER16-C25-80 | 1 | ● | 25 | — | — | 80 | | |
| EM-ER16 | 2 | ● | — | 22 | 19 | — | — | |

NEW

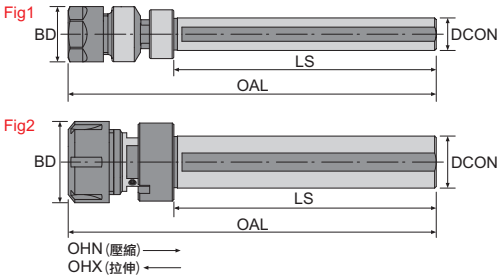
EKA

 ER夾頭柄 ER Collet Chuck
 材質：鋼 Shank：Steel


寸法 Dimension(mm)

| 產品型號 Model No | 在庫 Stock | 柄部直徑 | | | | 夾持範圍 Capacity | 無頭螺絲 Screw | 無頭螺絲 Screw | 價格 Price |
|------------------|----------|------|-----|----|--------|---------------|------------|------------|----------|
| | | DCON | LF | BD | DCON | | | | |
| EKA-ER16-C25-95 | ● | 25 | 95 | 28 | 0.5-10 | ES-606 | ES-1225 | | |
| EKA-ER20-C25-95 | ● | 25 | 95 | 34 | 2-13 | | | | |
| EKA-ER20-C32-120 | ● | 32 | 120 | 34 | 2-13 | ES-806 | ES-1225 | | |
| EKA-ER25-C32-120 | ● | 32 | 120 | 42 | 2-16 | | | | |
| EKA-ER20-C40-120 | ● | 40 | 120 | 34 | 2-13 | ES-810 | ES-1225 | | |
| EKA-ER25-C40-120 | ● | 40 | 120 | 42 | 2-16 | | ES-1225 | | |
| EKA-ER32-C40-120 | ● | 40 | 120 | 50 | 3-20 | | | | |

AKA

 伸縮攻牙器 Straight Shank Tapper
 材質：鋼 Shank：Steel


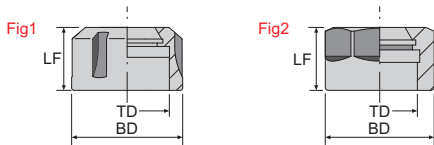
寸法 Dimension(mm)


 新品上市
 New Arrival

| | 產品型號 Model No | 在庫 Stock | 柄部直徑 | | 全長 OAL | 刀體直徑 BD | 最小壓縮 OHN | 最大拉伸 OHX | 價格 Price |
|------------|---------------|----------|------|----|--------|---------|----------|----------|----------|
| | | | DCON | LS | | | | | |
| NEW | AKA20-ER16-85 | | 20 | 85 | 130 | 28 | 4 | 8 | |
| NEW | AKA25-ER16-85 | | 25 | 85 | 130 | 28 | 4 | 8 | |
| NEW | AKA20-ER20-85 | ● | 20 | 85 | 150 | 34 | 4 | 8 | |
| NEW | AKA25-ER20-85 | | 25 | 85 | 150 | 34 | 4 | 8 | |
| NEW | AKA32-ER32-85 | | 32 | 85 | 150 | 50 | 4 | 10 | |
| NEW | AKA40-ER32-85 | | 40 | 85 | 150 | 50 | 4 | 10 | |

EC-ER

螺母 Nut
材質：鋼 Shank：Steel

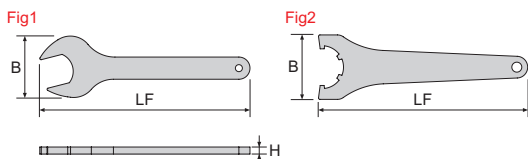


寸法 Dimension(mm)

| 產品型號 Model No | 圖解 Fig | 在庫 Stock | 標準全長 | | | 價格 Price |
|---------------|--------|----------|------|----|----|----------|
| | | | LF | BD | TD | |
| EC-ER16 | 2 | ● | 18.7 | 28 | 22 | |
| EC-ER20 | 2 | ● | 21.7 | 34 | 25 | |
| EC-ER25 | 1 | ● | 23.8 | 42 | 32 | |
| EC-ER32 | 1 | ● | 25.2 | 50 | 40 | |

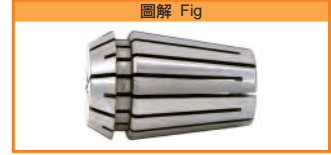
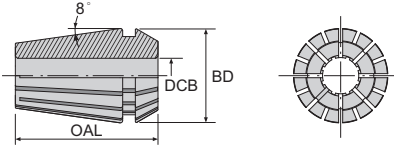
ER

ER 扳手
ER Wrench



寸法 Dimension(mm)

| 產品型號 Model No | 圖解 Fig | 在庫 Stock | 標準全長 | | | 價格 Price |
|---------------|--------|----------|------|------|-----|----------|
| | | | H | B | LF | |
| ER-16A | 1 | ● | 6 | 52.6 | 180 | |
| ER-20A | 1 | ● | 6 | 56 | 200 | |
| ER-25A | 2 | ● | 6 | 64.7 | 210 | |
| ER-32A | 2 | ● | 6 | 25 | 250 | |

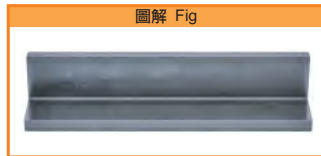
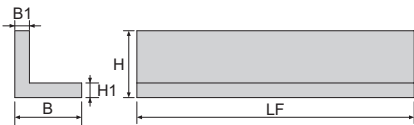
ER 筒夾
 Collet


寸法 Dimension(mm)

| 產品型號 Model No | 在庫 Stock | 刃柄徑 孔徑 DCB | 筒夾直徑 標準全長 | | 價格 Price |
|---------------|----------|--|-----------|-----|-------------|
| | | | BD | OAL | |
| ER11- | ● | 2、3、4、5、6 | 11.5 | 18 | |
| ER16- | ● | 2、3、4、5、6、8、9、10 | 17 | 27 | |
| ER20- | ● | 2、3、3.5、4、4.5、5、5.5、6、6.5、7、7.5、8、8.5、9、9.5、10、10.5、11、11.5、12、12.5、13 | 21 | 31 | |
| ER25- | ● | 2、3、4、5、6、7、8、9、10、11、12、12.5、13、14、15、16 | 26 | 34 | |
| ER32- | ● | 3、4、6、8、9、10、10.5、11、11.5、12、13、14、15、16、17、18、19、20 | 33 | 40 | |
| ER40- | ● | 4、13、16、20、23、26 | 41 | 46 | |

LST

外徑墊高輔助刀座
Increased Outer Diameter Converter



寸法 Dimension(mm)

| 產品型號 Model No | 在庫 Stock | 刀柄高度 | 刀柄高度 | 刀柄寬度 | 刀柄寬度 | 標準全長 | 價格 Price |
|---------------|----------|------|------|------|------|------|----------|
| | | H | H1 | B | B1 | LF | |
| LST-2020K25 | ● | 25 | 5 | 25 | 5 | 125 | |
| LST-2525M32 | ● | 32 | 7 | 32 | 7 | 150 | |